

quick guide

guía rápida

guide rapide

vigilec zero - V1Z

internal configuration

configuración interna

descriptif intérieur

CURRENT TRANSFORMER
TRANSFORMADOR DE INTENSIDAD
TRANSFORMATEUR D'INTENSITE

CIRCUIT BREAKER
MAGNETOTÉRMICO
DISJONCTEUR

CONTACTOR
CONTACTOR
CONTACTEUR

CAPACITOR PLACE
SITIO CONDENSADOR
EMPLACEMENT CONDENSATEUR

PLUG-IN MODULE SOCKET
BASE MÓDULO ENCHUFABLE
SOCLE MODULE EMBROCHABLE



MAN - 0 (RESET) - AUTO SELECTOR
SELECTOR MAN - 0 (RESET) - AUTO
COMMUTEUR MANU - 0 (RESET) - AUTO

CONTROL TERMINAL BLOCKS
BORNAS DE CONTROL
BORNES DE COMMANDE

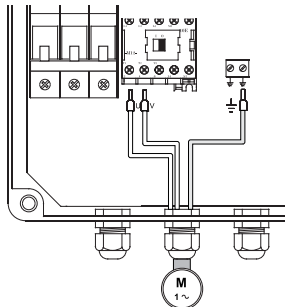
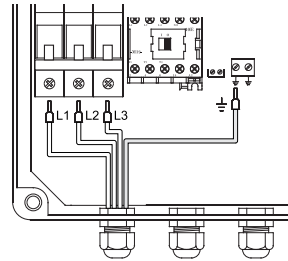
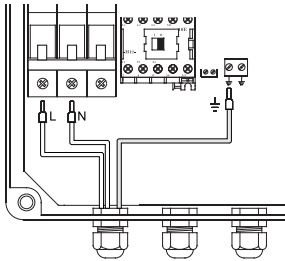
GROUND TERMINAL BLOCKS
BORNAS DE TIERRA
BORNES DE TERRE

CABLE GLANDS / PRENSA ESTOPAS / PRESSE-ÉTOUPES

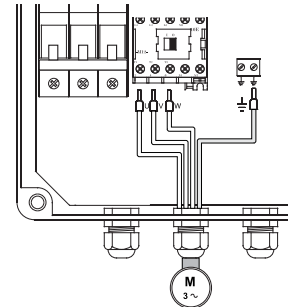
power connections

conexiones de potencia

raccordements de puissance



M
1 ~



M
3 ~

control module

módulo de control
module de contrôle

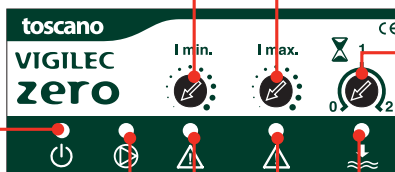
UNDERLOAD SETTING (Imin)
AJUSTE BAJACARGA (Imin)
RÉGLAGE SOUS-INTENSITÉ (Imin)

OVERLOAD SETTING (Imax)
AJUSTE SOBRECARGA (Imax)
RÉGLAGE SURINTENSITÉ (Imax)

POWER ON
PRESENCIA TENSIÓN
PRÉSENCE TENSION

PUMP RUNNING
BOMBA EN MARCHA
POMPE EN MARCHÉ

UNDERLOAD / PHASE LOSS
BAJACARGA / FALTA DE FASE
SOUS-INTENSITÉ / MANQUE DE PHASE



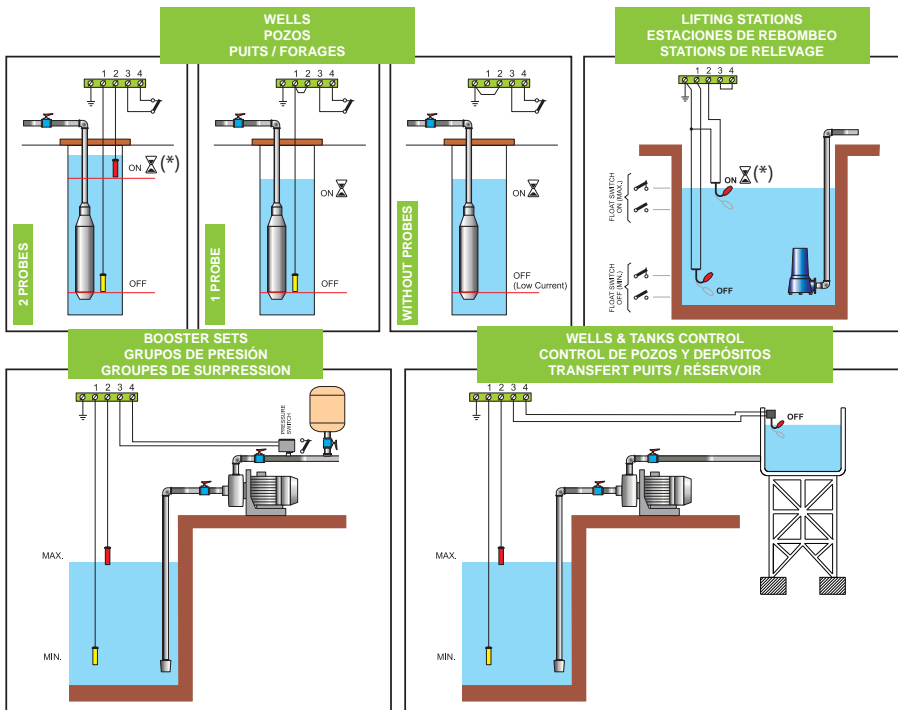
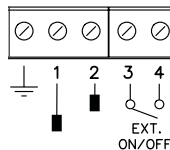
RESTART TIME SETTING
AJUSTE TIEMPO REARME
RÉGLAGE TEMPO MANQUE D'EAU

LOW LEVEL
NIVEL BAJO
MANQUE D'EAU

OVERLOAD / PHASE LOSS
SOBRECARGA / FALTA DE FASE
SURINTENSITÉ / MANQUE DE PHASE

control connections

conexiones de control
raccordements de commande



(*) ⌘ Set to "0" recommended / Se recomienda ajustar a "0" / Réglage à "0" recommandé

current settings

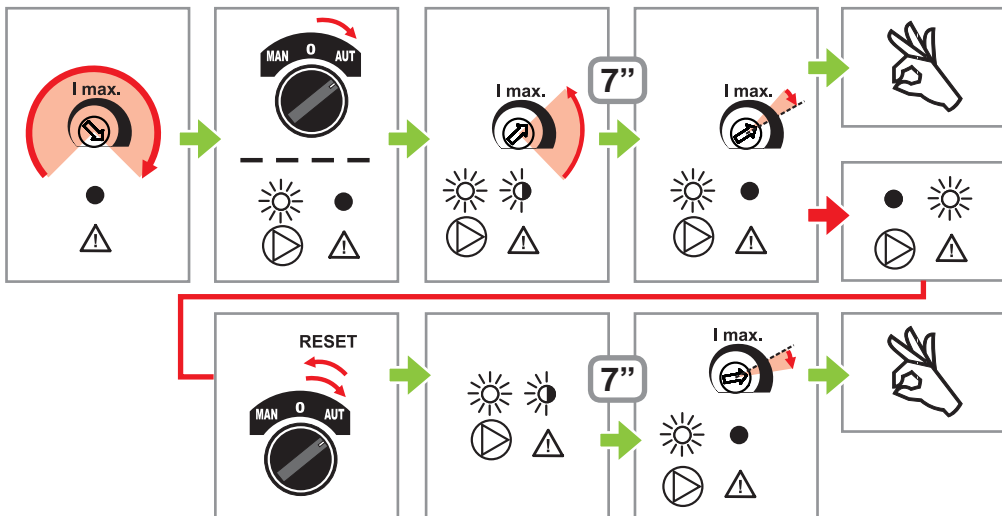
ajustes de intensidad

réglages d'intensité

overload setting (I_{max})

ajuste de sobrecarga (I_{max})

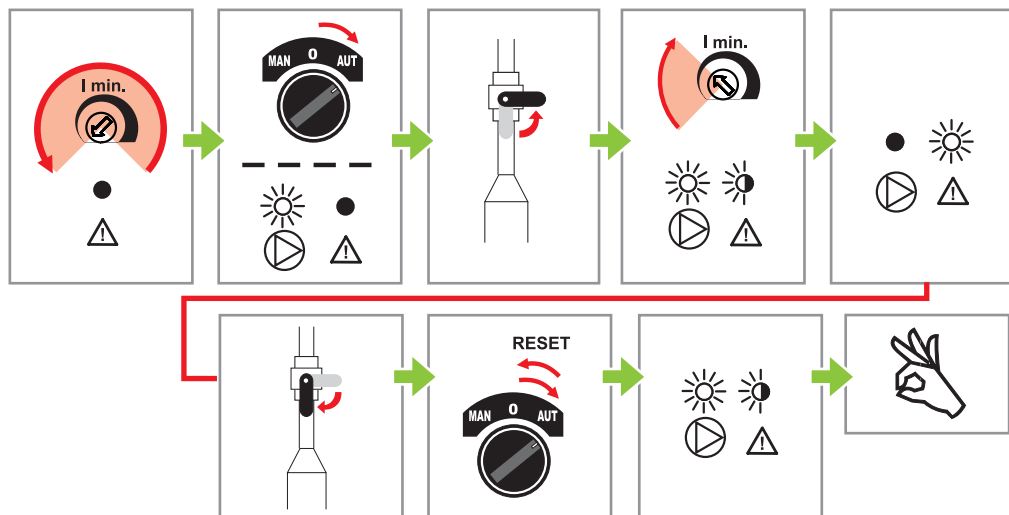
réglage de surintensité (I_{max})



underload setting (I_{min})

ajuste de bajacarga (I_{min})

réglage de sous-intensité (I_{min})



technical specifications

especificaciones técnicas

spécifications techniques

Supply voltage	400V~ III (according to the model) -20% +30% - 50/60Hz
Pump maximum current	18A - AC3
Overload/underload setting	1,5...25A (alarm trip in 7 seconds)
Re-start time	0...2 hours
Probes supply voltage	24V~
Probes sensitivity	9 Kohm (protected against storms transient) Wire distance: 200m. max. Minimum section: 0,5mm ²
Remote for EXTERNAL ON/OFF connection	Contact or voltage 6 to 250V~/V=
Terminal blocks wiring size	10mm ² (power) 4mm ² (control)
Cable glands configuration	1xM20 (main supply) / 1xM20 (motor) / 2xM16 (control)
Protections	Overload, underload, phase failure, over- voltage, pump wiring failure and wrong control wiring
Recording information (PUMPCHECK)	Module identification number, counter resets, pump running hours, pump starts, pump alarms and last alarm tripping current
Size/Weight/IP/Temperature	240 (height) x 190 (width) x 110 (depth) / 1820g / IP66 / -10 +55°C

